



INSTRUCTION MANUAL

Eccoflow power head



www.juwel-aquarium.com

Introduction

Thank you for choosing a JUWEL Aquarium product.

Our products represent over 50 years experience in the manufacturing of aquariums and their accessories applying most modern production techniques bringing together the JUWEL Aquarium system, which is both easy to use and simple to maintain.

Please read this instruction manual carefully and completely to make sure you have received all components before setting up the aquarium. Please observe the safety instructions and maintenance guidelines given in this manual.

This instruction manual has been carefully prepared to provide you with accurate and complete information. All efforts have been made to ensure that the information given is correct. However, we cannot accept responsibility for printing or other errors. Technical details are always approximate and are not warranted characteristics and may be subject to change without notice.



SAFETY INSTRUCTIONS:

- This appliance can be used by children aged from 8 years and above and persons with reduced physical, sensory or mental capabilities or lack of experience and knowledge if they have been given supervision or instruction concerning use of the appliance in a safe way and understand the hazards involved. Children shall not play with the appliance. Cleaning and user maintenance shall not be made by children without supervision.
- The power plugs of the electrical devices must not become moist. Connect the power plugs to the power supply at such a height that the connection cable forms a loop which would enable the water to drip down.
- At all times, only operate the electrical devices for your aquarium (lighting, heater, pump etc.) using an earth leakage circuit breaker (EL circuit breaker) with a maximum tripping current of 30 mA. If the socket that you are using in your home installation is not safeguarded with such a circuit breaker, please use a commercially available power strip with an integrated earth leakage circuit breaker.
- The electrical devices may only be operated in rooms.
- Pull the power plug of all devices operated in water before coming into contact with the water.



This product fulfils the guidelines issued by the European Union (EU) and is therefore entitled to carry the CE mark.
www.juwel-aquarium.de/en/declaration-of-conformity/



SAFETY INSTRUCTIONS:

- Never operate the power head out of water.
- Always unplug the power head from the power supply before removing it from the filter.
- The power head is intended for indoor use and for use in fluids up to 35°C.
- Never repair the electrical cord or plug. In case of damage replace the complete power head.



Recommendation:

We recommend that you replace the parts subjected to wear and tear, e.g. the impeller, axle and the rubber axle holders, at intervals of approx. 12 months in order to ensure the optimum function and operating quietness of the pump. Inquire at your specialist retailer for assistance.



Recommendation:

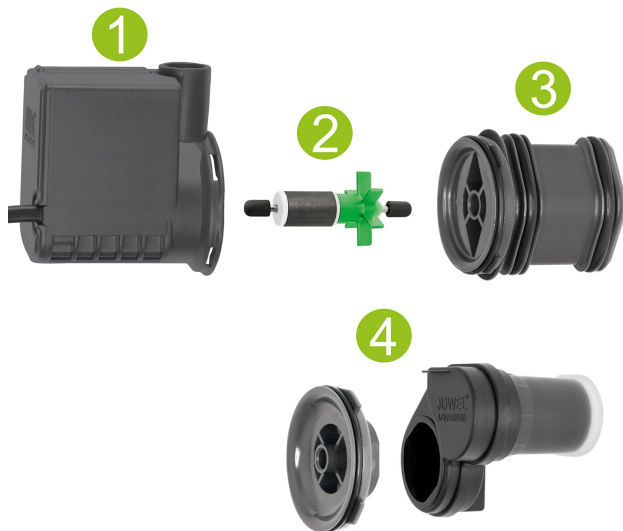
If you wish to operate the pump JUWEL Eccoflow in a seawater aquarium, you will need the JUWEL Eccoflow ceramic shaft set for the impeller. Item No. 85225 for pump JUWEL Eccoflow 500/600/1000. Item No. 85226 for pump Juwel Eccoflow 1500. Inquire at your specialist retailer to that end.

The pump JUWEL Eccoflow

The new pump JUWEL Eccoflow distinguishes itself with operating quietness and a high flow rate. The new design and the improved technology make the use and the maintenance even easier. Utilising the enclosed adapters, the pump JUWEL Eccoflow is suitable as replacement for the pumps JUWEL Bioflow and also the JUWEL pump types 300/500/600/1000/1500.

The new pump JUWEL Eccoflow essentially consists of:

1. Motor
2. Impeller with axle and rubber mounts
3. Pump adapter for the JUWEL filter system Bioflow
4. Connection ring for the JUWEL Compact, Standard H and Jumbo filter system (Pump adapter Order No. 85136)



Installation of the pump JUWEL Eccoflow in the filter system Bioflow Super, M, L & XL

Please ensure that the impeller has been properly inserted and the pump adapter has been firmly connected to the motor prior to the installation of the new pump.

Please proceed as follows:

1. Disconnect all electrical devices of the aquarium from the power grid.
2. Remove the outlet nozzles and remove the old pump from the filter.
3. Insert the new pump into the separation wall of the filter and firmly push it into place.
4. Connect the outlet nozzle to direct the waterflow as desired from the outside to the outlet opening of the pump. Reinstall the gasket into the round opening of the filter housing when connecting the outlet. This decreases vibration transmissions.

Now the pump is ready for operation and you may reconnect the electrical devices to the power grid.



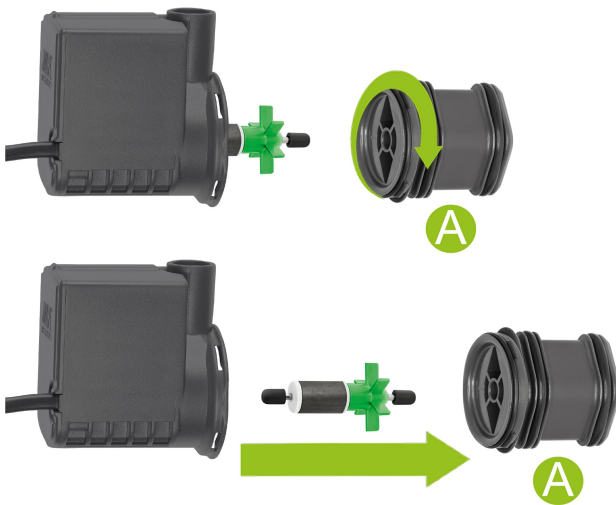
Maintenance of the pump JUWEL Eccoflow in the filter system Bioflow Super M, L, XL

The JUWEL Eccoflow pump should be checked with regard to functionality and cleaned at regular intervals (at least once a month).

Please proceed as follows to this end:

1. Disconnect all electrical devices that are operated in the water from the power grid.
2. Remove the outlets.
3. Remove the pump from the pump retainer of the filter.
4. Disconnect the adapter (A) from the motor by turning it counter-clockwise and remove the impeller from the chamber.
5. Now clean all components thoroughly. Deposits and dirt should in particular be removed from the pump chamber, the impeller and pump shaft. Otherwise the functionality of the pump will be impaired.
6. Check the impeller for damage and possible signs of wear of the magnet. You should also ensure that the two rubber bearings are located on the ends of the pump shaft.

After that, please reinstall the pump in reverse order in the filter.

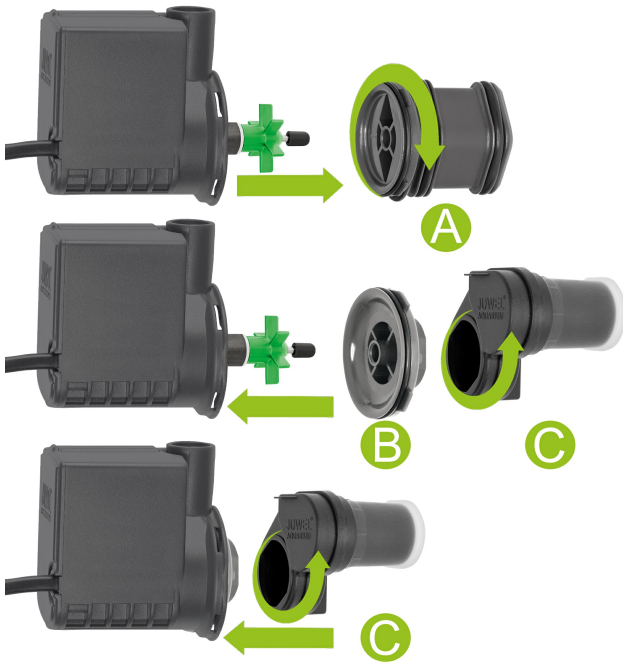


Installation of the pump JUWEL Eccoflow in the filter system Compact, Standard H and Jumbo

Please proceed as follows in order to install the new pump:

1. Disconnect all electrical devices of the aquarium from the power grid.
2. Remove the adapter (A) from the motor and replace it with the connection ring (B) as shown on the picture at the new pump JUWEL Eccoflow.
3. Remove the outlet nozzles and remove the old pump and the pump adapter from the filter.
4. Now arrange the pump on the pump adapter (C) and turn it all the way to the right.
5. Firmly place the new pump on the separation wall; the outlet of the pump must point at the round opening in the filter housing.
6. Connect the outlet nozzle to direct the waterflow as desired from the outside to the outlet opening of the pump. Reinstall the gasket into the round opening of the filter housing when connecting the outlet. This decreases vibration transmissions.

Now the pump is ready for operation and you may reconnect the electrical devices to the power grid.



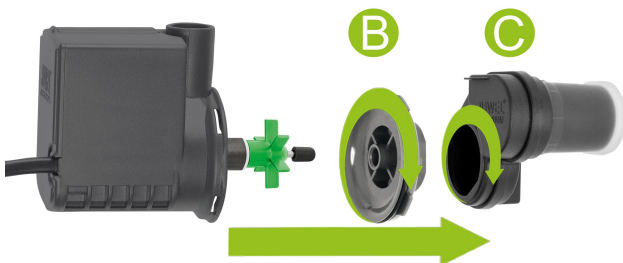
Maintenance of the pump JUWEL Eccoflow in the filter system Compact, Standard H, Jumbo

The pump JUWEL Eccoflow should be checked with regard to functionality and cleaned at regular intervals (at least once a month).

Please proceed as follows:

1. Disconnect all electrical devices of the aquarium from the power grid.
2. Remove the outlet nozzles.
3. Remove the pump from the filter.
4. Disconnect the pump adapter (C) and the connection ring (B) from the motor by turning them counter-clockwise and remove the impeller.
5. Thoroughly clean all components. It is particularly necessary to remove the impeller from the chamber and remove deposits and dirt from the chamber itself as well as the impeller. The function of the pump will be impaired otherwise. Also check the impeller for damage and possible signs of wear of the magnet.

After that, please reinstall the pump in reverse order in the filter.



Eccoflow Pump symbols





PLEASE RECYCLE AS REQUIRED!

Please do not hesitate to contact our competent administration if you have any questions.



Proper disposal (electrical waste)

The labelling on the product or on the accompanying literature declares that it must not be disposed of, at the end of its service life, together with household rubbish. Please dispose of this equipment separately from other waste, to protect the environment or public health from damage by unregulated waste disposal.

Recycle the equipment and support the sustained recycling of material resources.

Private users should contact the dealer who sold them the product or the responsible authorities, for a demonstration on how to recycle the equipment in an environmentally friendly way.

Guarantee

We guarantee the performance of the JUWEL-Aquarium product or its accessories to the purchaser for a period of 24 months from the date of purchase according to the following conditions:

§ 1 Extent of the guarantee

(1) This guarantee extends to the JUWEL-Aquarium product and its components excluding items subject to wear and tear such as T5 and T8 light tubes and filter media. It is limited to the product as such and does not cover damage to other property and/or individuals. In addition, the provisions of the product liability law apply. These provisions are not limited by the aforementioned arrangement.

(2) It is the prerogative of JUWEL-Aquarium to decide whether the guarantee is performed by means of repair or replacement. If neither repair nor replacement can ensure the performance of the JUWEL-Aquarium product the purchaser is entitled to demand a reduction in price or to return the product against repayment of the purchase price.

§ 2 Guarantee period and settlement procedure

(1) The guarantee period begins on the day of the purchase of the JUWEL Aquarium product from the retailer. Claims under this guarantee will not be honoured, if

- (a) the damage is caused as a result of improper use or maintenance or nonobservance of the instructions given in this manual
- (b) the product or its components have been maintained by persons or companies not authorised by the manufacturer to do so
- (c) the product or its components have been damaged by mechanical means of whatsoever kind, in particular broken glass

(2) All claims under this guarantee have to be notified to the retailer, from whom the aquarium has been purchased without delay, however, not longer than 2 weeks from the day of first occurrence of defects. Rights under the consumer protection laws will remain unaffected.

(3) Guarantee claims will only be accepted if the validity of the claim is supported by evidence of purchase of the JUWEL-Aquarium product. This declaration of guarantee is a translation only. In case of doubts the original German language version prevails.

We reserve the right to make technical alterations.

© JUWEL AQUARIUM

® JUWEL, Trigon, Vision, Rekord, Rio, Lido, Vio, Primo, Korall, MonoLux, DuoLux, MultiLux, KorallLux, Violux, NovoLux, PrimoLux, SeaSkim, EccoSkim AquaHeat, EasyFeed, SmartFeed, High-Lite, Warm-Lite, Colour-Lite, Day-Lite, Juwel Twin-Lite, HiFlex, SmartControl, Juwel Eccoflow, Bioflow, Cirax, Nitrox, Phorax, Carbox, BioPad, BioCarb, BioPlus, bioBoost, OxyPlus, Silexo, Conexo.

JUWEL AQUARIUM AG & CO. KG

Karl-Göx-Straße 1 27356 Rotenburg/Wümme . GERMANY

Telefon +49(0)42 61/93 79-32

Telefax +49(0)42 61/93 79-856

Service-Mail service@juwel-aquarium.de

JUWEL AQUARIUM UK Branch

Gateway 11 Business Park

Penfold Drive, Wymondham Norfolk NR18 0WZ

Tel.: 01953 606 363 Fax: 01953 603 839

E-Mail: info@juwel-aquarium.co.uk

Service-Mail: info@juwel-aquarium.co.uk